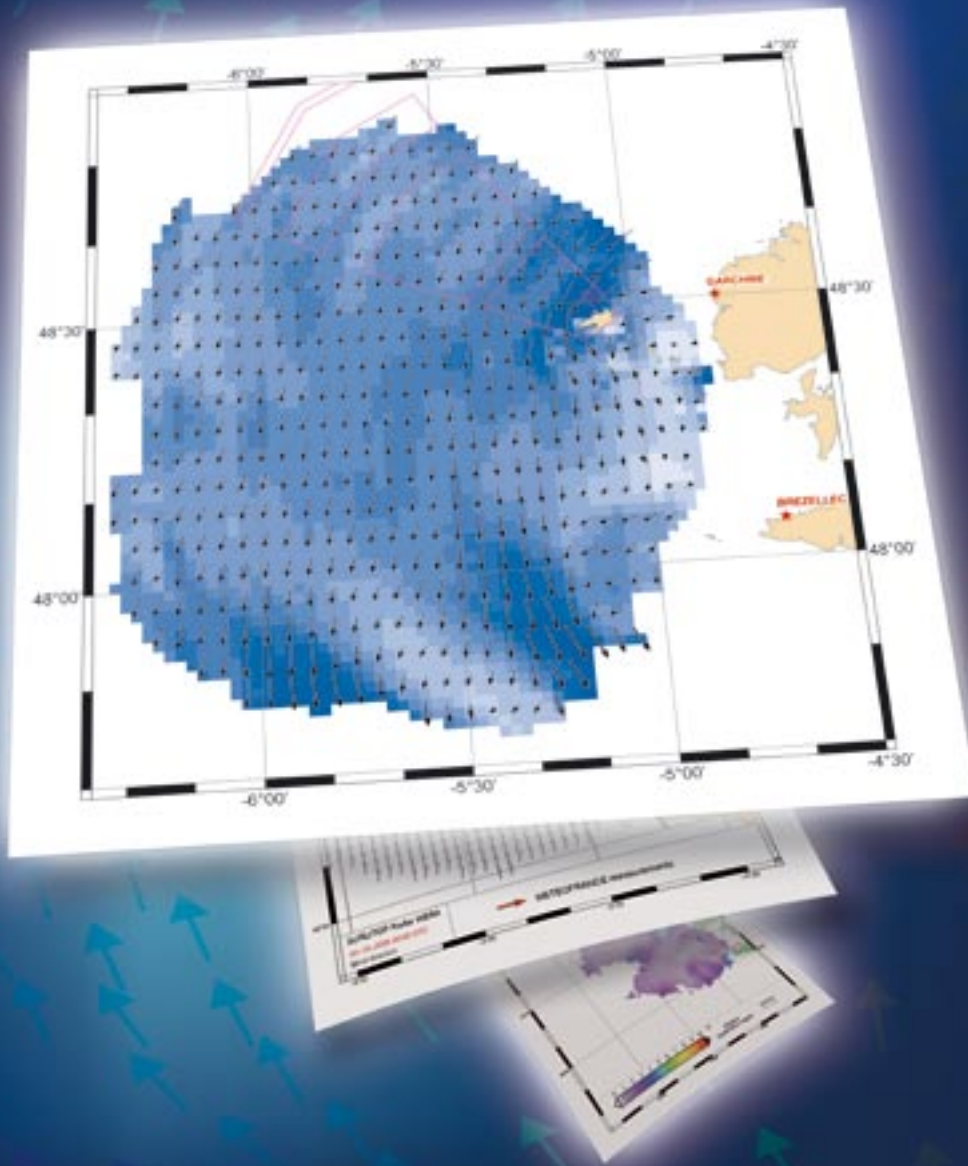
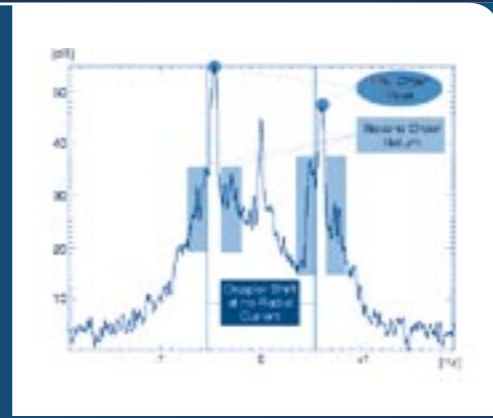


*Leader in reliable high-quality
ocean current, wave and wind mapping*

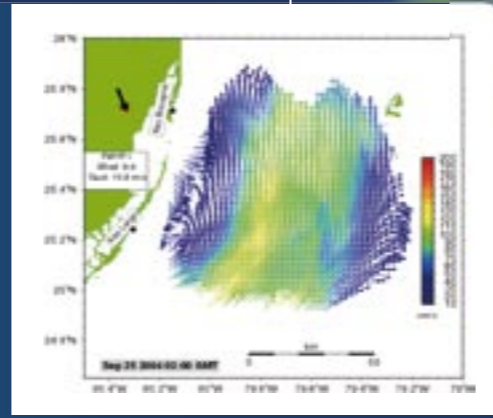




▲ WERA linear antenna array at a public beach on Key Biscayne, USA

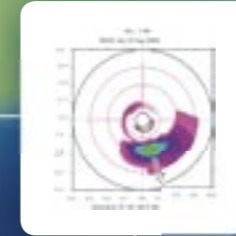


▲ Doppler spectrum



▲ Surface current image during the passage of Hurricane Jeanne, September 2004*

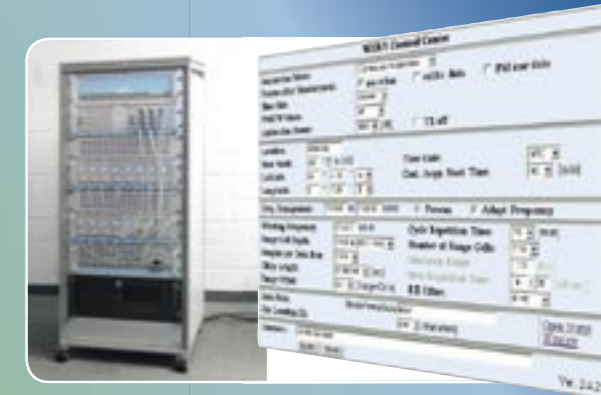
i This current map was generated with a pair of 16 channel, 16 MHz WERA systems providing a temporal resolution of 10 minutes.



Directional wave spectra can be generated up to half of the maximum range. Time series of current, wind and wave data can be extracted and archived at each grid point as well.

COASTAL MANAGEMENT

By monitoring with the highest temporal resolution for various applications:



▲ WERA Rack ▲ Screenshot of WERA Control Center

WERA combines all information for modern Coastal Management; measurements with high spatial and temporal resolution of Surface Currents, Wind Direction and Wave Parameters. For Over the Horizon Ship-Tracking, the system version „Waveguide“ is available through our partner Atlas-Elektronik GmbH.

Range of operation:

CURRENT

More than 200 km
Range resolution as fine as 250 m
Temporal resolution 3 to 10 min

WAVES

Significant waveheight and directional spectra up to 100 km

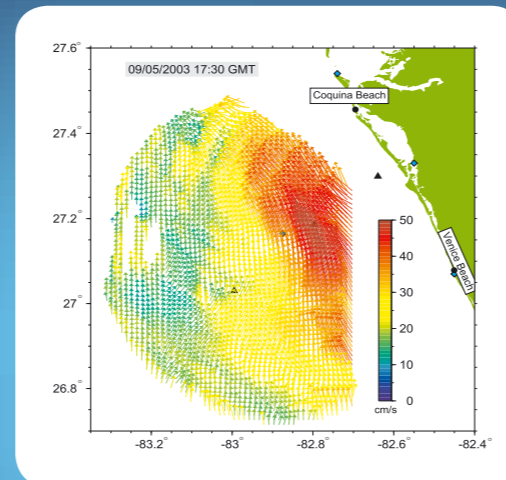
WIND

Direction up to 200 km
Wind speed (under investigation)

SHIP TRACKING ****

Up to 200 km

RELIABLE

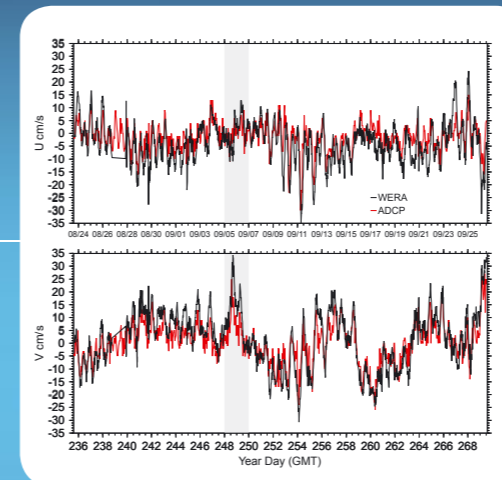


The robust shore based system delivers reliable data even under extreme weather and very dynamic ocean current conditions.

This surface current image was taken during the passage of Tropical Storm Henri on the 5th of September 2003.*

* WERA data kindly provided by Prof. Nick Shay, RSMAS Miami

HIGH QUALITY

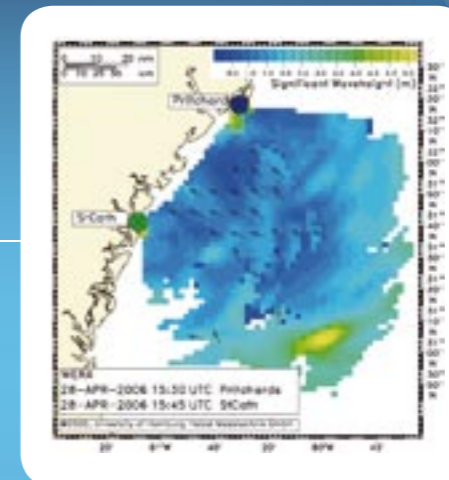


Time series comparison of the surface currents (WERA data in black) and sub-surface currents measured with an ADCP current meter during the experiment at the west coast of Florida.

The grey hatched area depicts the time when Tropical Storm Henri passed north of the HF-radar domain.**

** ADCP data kindly provided by Prof. Bob Weisberg at USF

OCEAN DATA



Maps of Significant Wave Height are available for each grid point within half of the radar range.

This wave map was taken at the east coast of South Carolina and Georgia.***

*** WERA data kindly provided by Prof. Dana Savidge at SKIO and Prof. Rich Styles at USC

Search & Rescue Operations can narrow down the search radius for overboard persons or material.

Port authorities can use the data to improve vessel traffic services.

Scientists can use the complex current and wave maps for their research.

Met-offices benefit from WERA real-time data for forecasts.

Fishing Industry can optimise their operational area.

Environmental Protection benefits from this information in case of oil spills or lost containers.

Data can be used for planning of Off-shore installations like wind-farms or oil rigs.

Homeland Security is given a powerful tool to detect vessels beyond the horizon up to 200 km.****

Tourism Industry can be supplied with information for yachting & recreation divers.

**** special system version "Waveguide" provided by our partner ATLAS Elektronik GmbH – www.atlas-elektronik.com



Helzel Messtechnik GmbH
Carl-Benz-Strasse 9
24568 Kaltenkirchen
Germany

Tel. +49(0) 4191-95 20-0
Fax +49(0) 4191-95 20-40
WERA@Helzel.com
www.Helzel.com

Features:

- ▶ **Flexible system** (5 to 50 MHz)
easily configured for long ranges
(more than 200 km @ 5 MHz)
or short range applications
with highest spatial resolution (250 m)
- ▶ **High temporal resolution**
30 s for ship tracking
3 min for currents
10 min for waves
- ▶ **Safe and low noise** operation mode:
Low and non-harmful RF-power
(7.5 Watts per transmit antenna).
Almost no interference with other radio
band users due to FMcw operation mode
- ▶ **Near real-time mapping** for measuring
surface currents
wind direction
significant wave height
- ▶ Extraction of data from **each grid point**
to generate **time series** of ocean data
and **directional wave spectra**

Partners:



Near real time softwares
Search and rescue modules
Sea parameters modelling

Actimar S.A.

24 Quai de la Douane
29280 Brest, France
Tel. +33(0) 298-44 24 51
www.actimar.fr



Field Services, System
Integration and 3-D
Numerical Modelling

ASL Environmental Sciences Inc.

1986 Mills Road
Victoria, BC, Canada
Tel. +1(0) 250-656 01 77
www.aslenv.com



Compact VHF Radar System
and Field Service

PortMap Pty. Ltd.

PO Box 806
Townsville 4814, Australia
Mobile +61(0) 439-28 11 23
portmap@austarnet.com.au



Software for wave, current
and wind measurement,
Quality Management

Seaview Sensing Ltd.

Sheffield Technology Parks
Sheffield S1 2NS, UK
Tel. +44(0) 114-201 57 05
www.seaviewsensing.com

We provide:

Support of your **site configuration**
and **installation of modular hardware**
that adapts easily to your requirements.

Our complete **on-site support package**
includes **site-planning, user-training**
and maintenance. Optional **control,**
signal processing software and
application software and regional
service support are all available
through our **global partners**.

Your local partner: