

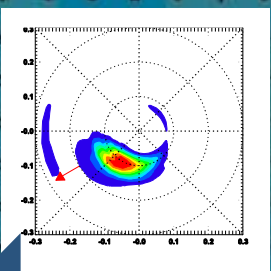
Metocean Data for Coastal Management



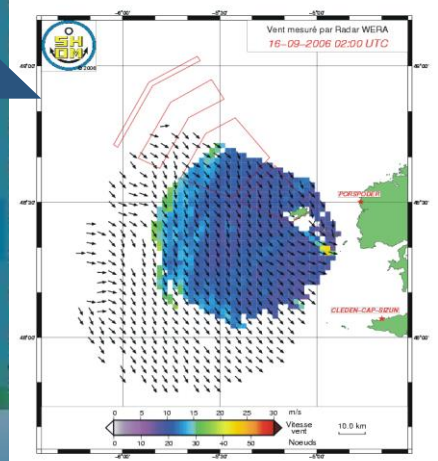
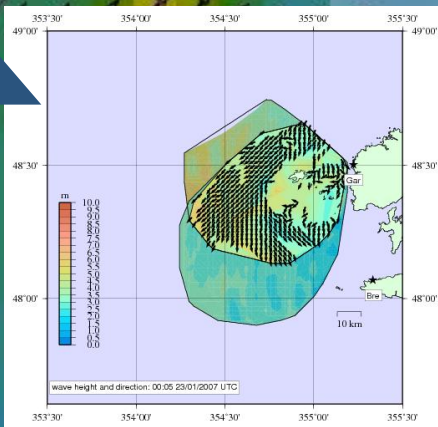
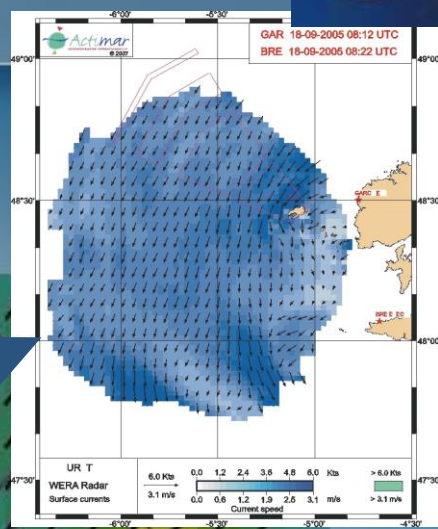
WERA provides valuable information for Coastal Management ;

near real-time measurements of **surface currents**, **wind- and wave parameters** with **high spatial** and **temporal resolution**.

- **Accurate and reliable data**
- **Ocean currents** over a range of more than **200 km**
- **Wave data** on the grid for more than **100 km range**



- **Directional wave spectrum**
- **Wind data, direction**
- **Shore based system, easy to install and maintain**



Leader in reliable high-quality ocean current, wave and wind mapping



Monitoring with the highest temporal resolution for various applications

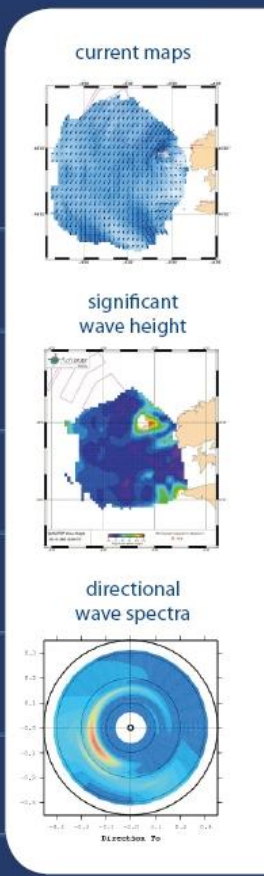
- **Port Authorities**
can use the data to improve vessel traffic services.
- **Search & Rescue Operations (SAR)**
can narrow down the search radius for overboard persons or material.
- **Environmental Protection**
benefits from this information in case of oil spills or lost containers or freight.
- **Disaster Management**
will profit from the high resolution data for time sensitive applications.
- **Scientists**
can use the complex current and wave maps for their research.
- **Met-Offices**
benefit from WERA real-time data for forecasts.
- **Fishing Industry**
can direct their fleets into areas that promise better yield.
- Data can be used for **Planning Offshore** installations like windfarms or oil rigs.
- **Tourism Industry**
can be supplied with information for yachting and recreation divers.



WERA Receive Antenna Array at a public beach in South Florida, USA

Every day WERA delivers valuable ocean data for a wide range of users:

- Coast Guards
- Met-Office
- Port Authority
- Fishing Centre
- Touristic Centres
- Vessel Traffic Service
- Scientists



The WERA systems can be purchased or leased.
Scientific service for specific measurement campaigns are available as well.